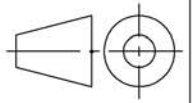

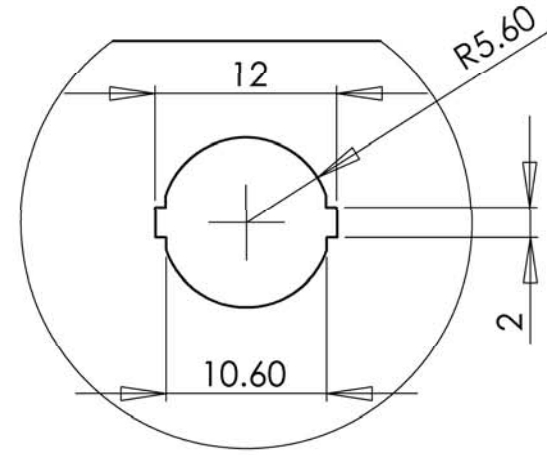
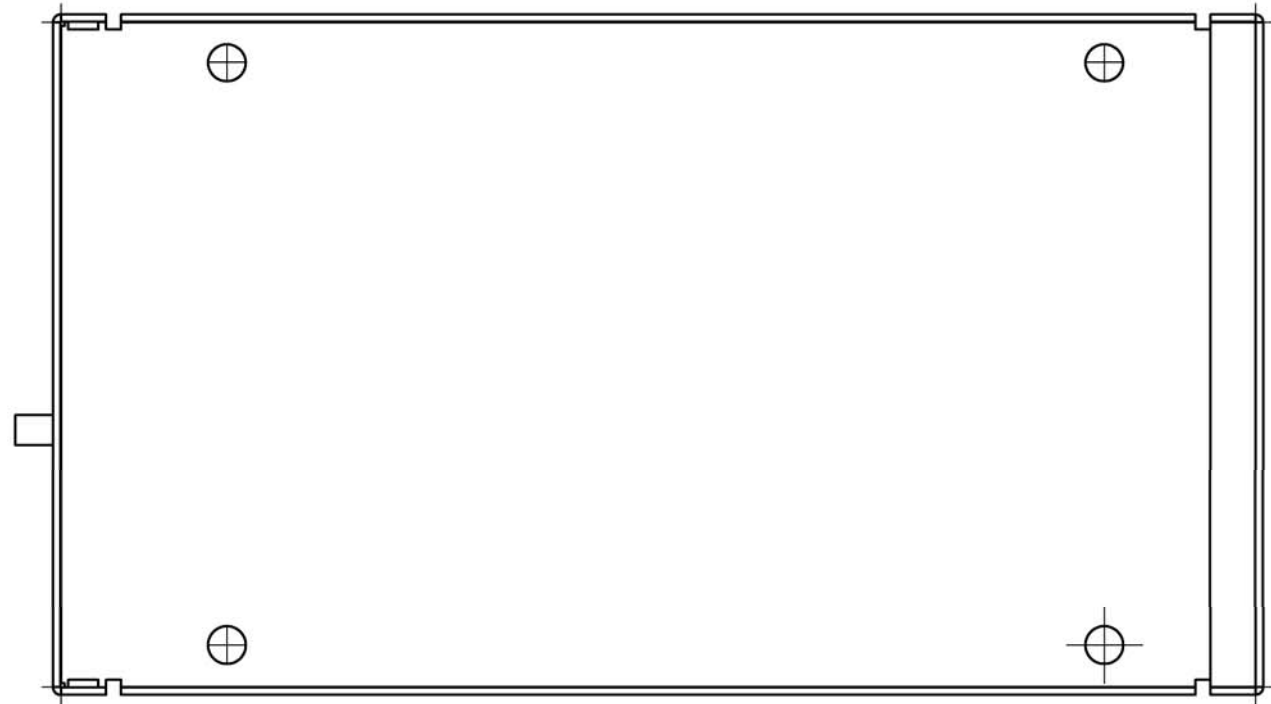
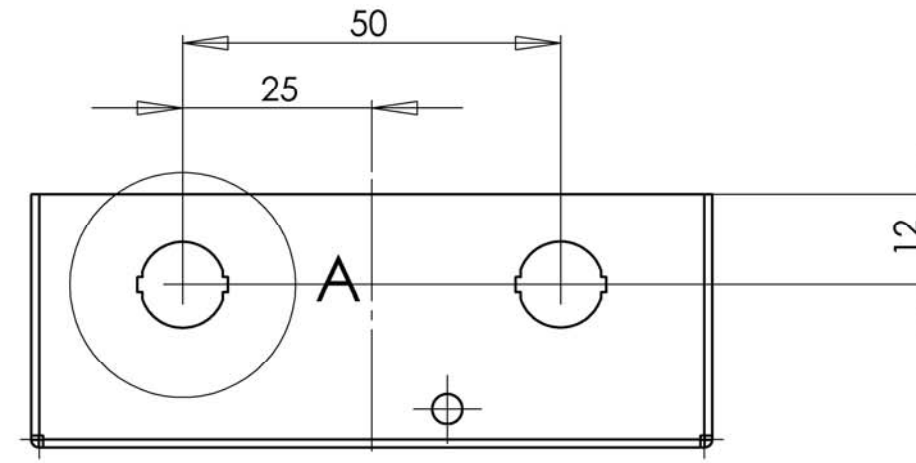


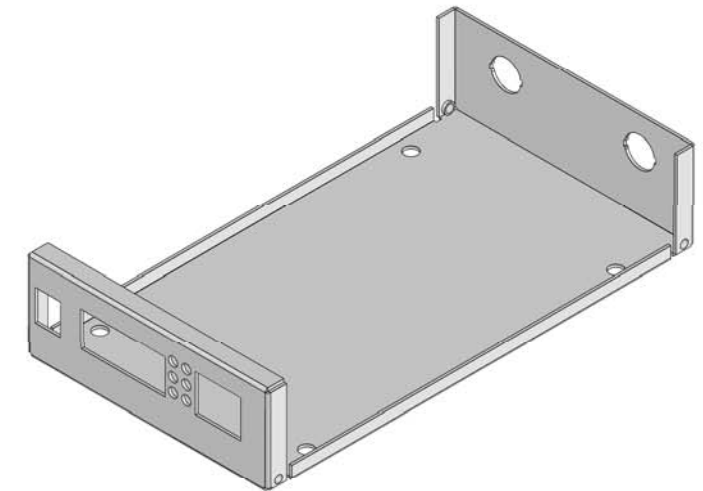
1. Unspecified R ≤ 0.2
 2. Unspecified tolerances: except p.3: DIN7168/FINE
 External: -IT12
 Internal: +IT12
 Others: ±IT12/2
 3. Hole coordinates with unspecified tolerances
 Hole pattern $\Phi \Phi 0,2$ for all coordinative dim-s;
 countersunks - $\Phi \Phi 0,1$

Tolerance		IT12
Nominal		
>	≤	
6	30	0.1
30	120	0.3
120	315	0.4
315	1000	0.6
1000	2000	1.0

Do not scale drawing		 Finish: black anodizing	Scale 1:1	Mass: 58 g	
			Material: Aluminium 5052 AlMg2.5		
		Date	Name		
		Drawn. 06.02.06	Veiders		
		Check.			
		Approv.			
		 ROUTING THE WORLD MikroTik www.mikrotik.com			Description: RB112 indoor case base N connector
					Drawing code: RB112-01 R1
		Printed: 27.03.2006			



DETAIL A
SCALE 2 : 1



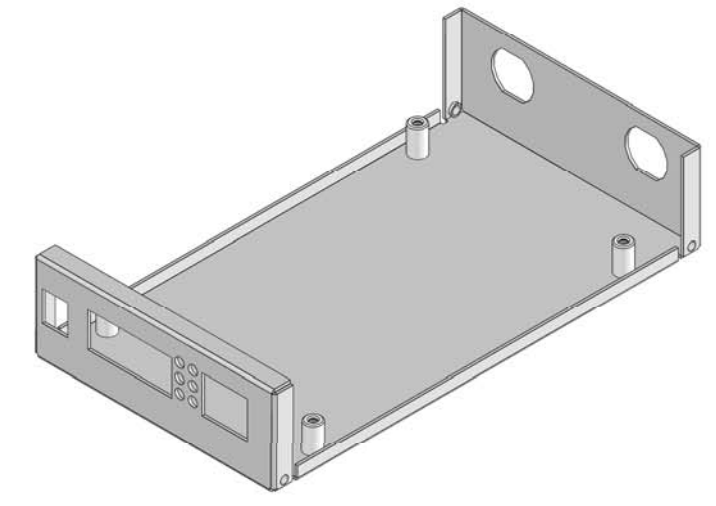
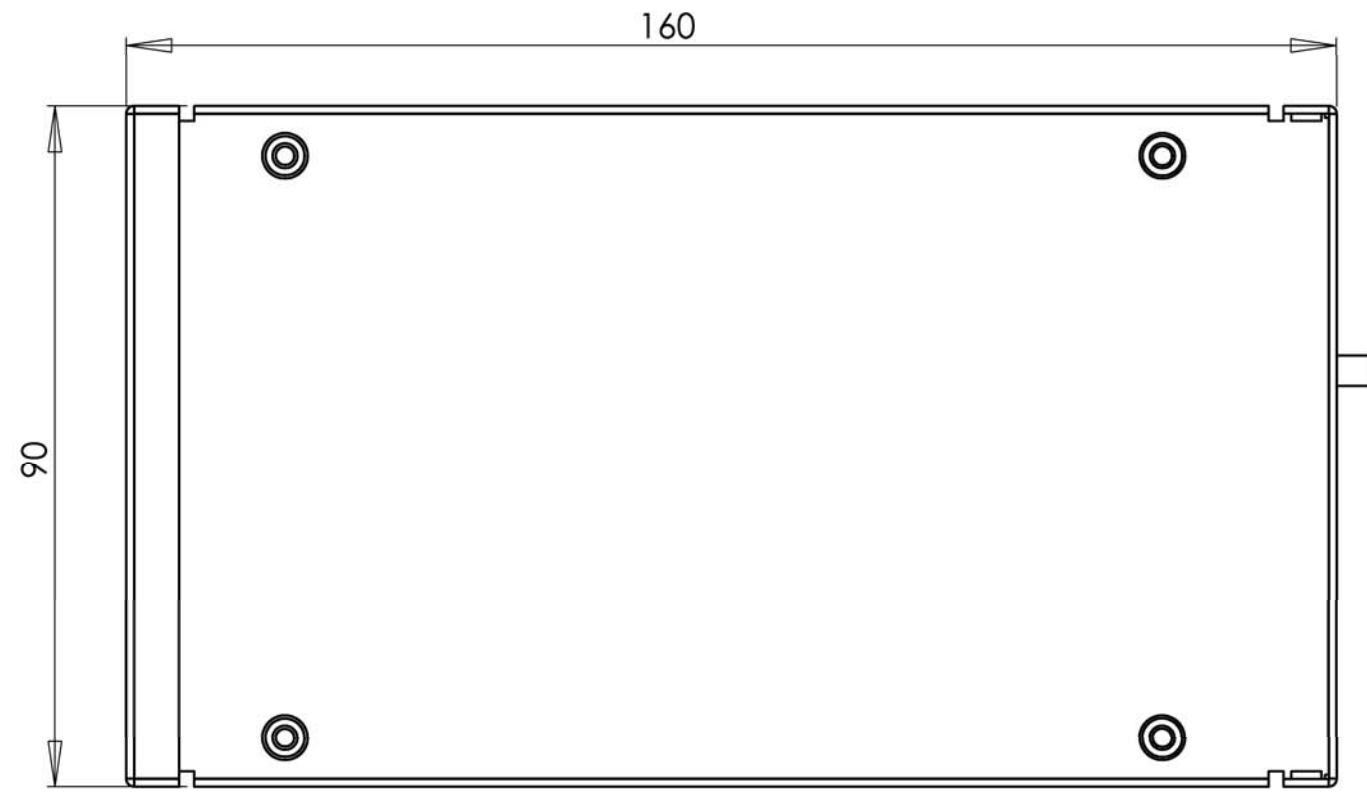
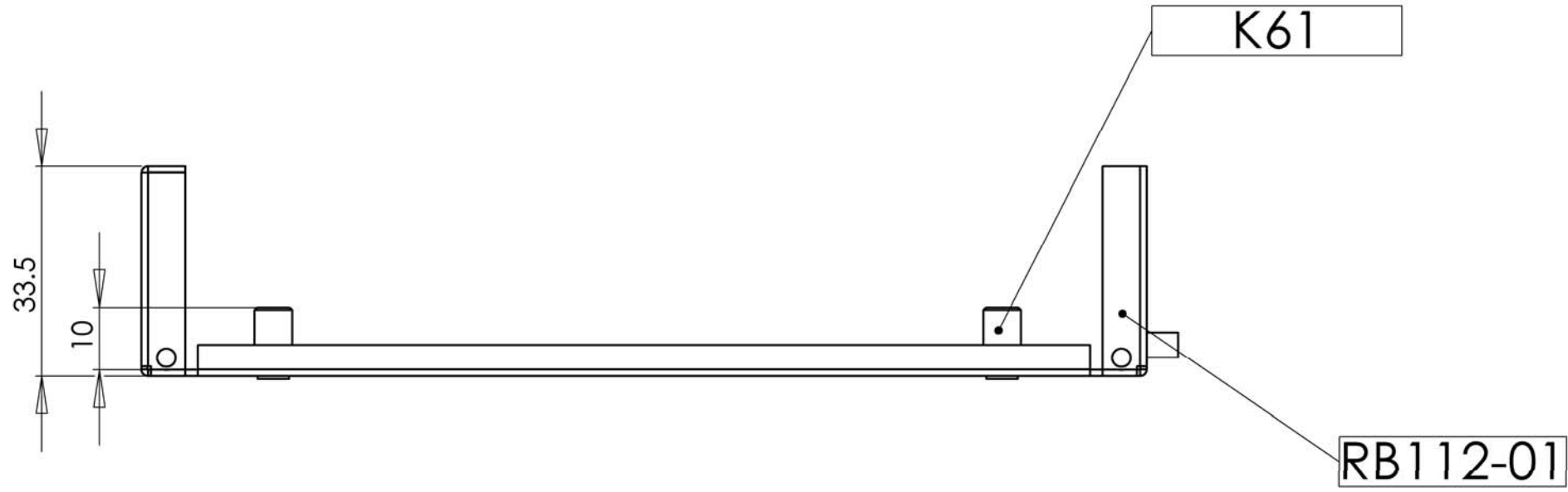
1. Unspecified R ≤ 0.2
 2. Unspecified tolerances: DIN7168/FINE
 except p.3:

Tolerance		IT12
Nominal		
>	\leq	
6	30	0.1
30	120	0.3
120	315	0.4
315	1000	0.6
1000	2000	1.0

External: -IT12
 Internal: +IT12
 Others: \pm IT12/2

3. Hole coordinates with unspecified tolerances
 Hole pattern $\phi \phi 0,2$ for all coordinative dim-s;
 countersunks - $\phi \phi 0,1$

Do not scale drawing			Finish: Black anodizing	Scale 1:1	Mass:
		Date	Name	Material: AlMg3 5754	
		Drawn. 27.03.06	Veiders	Description: RB112 case base R ant. connectors	
		Check.		Drawing code: RB112-04 R1	
		Approv.		A3	
		 www.mikrotik.com		Printed: 27.03.2006	
				sheet 1 of 1	

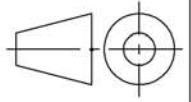



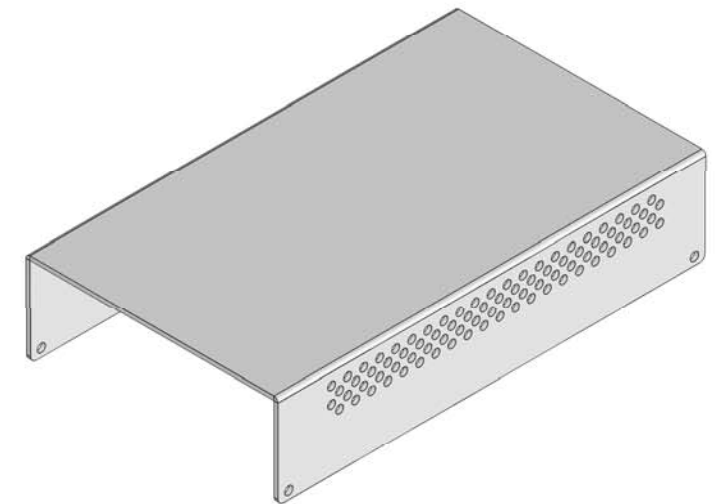
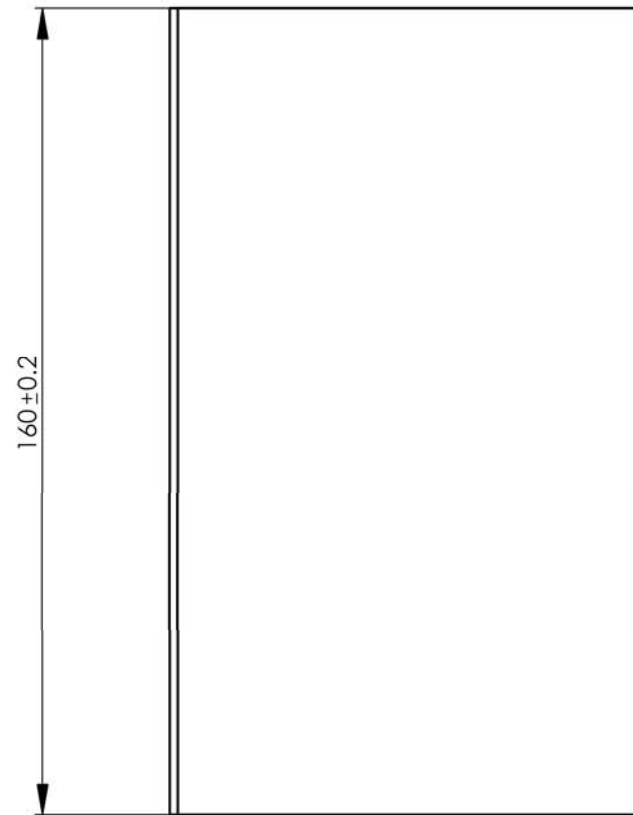
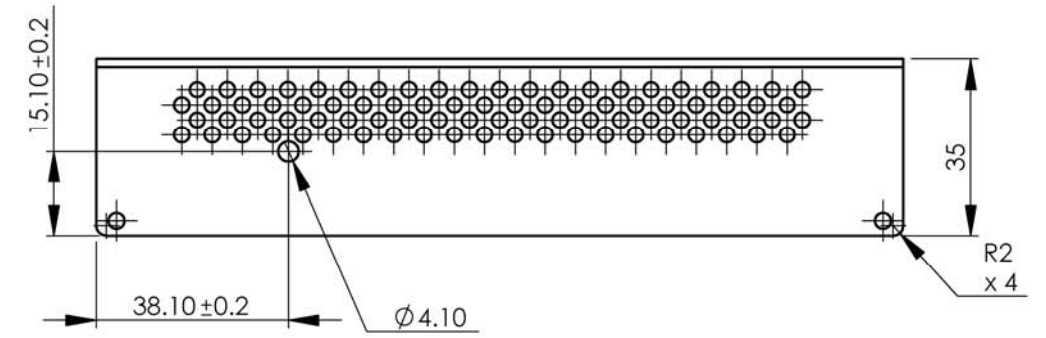
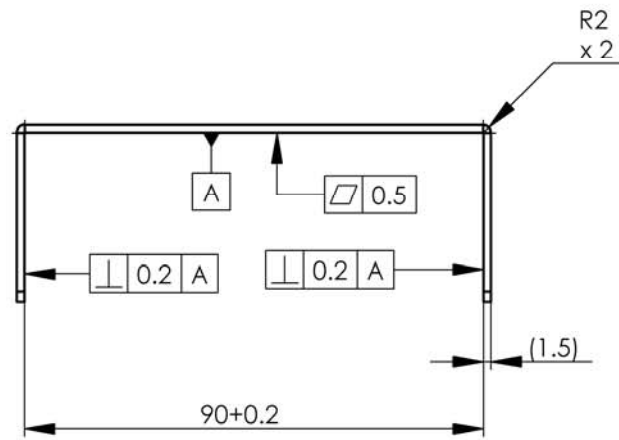
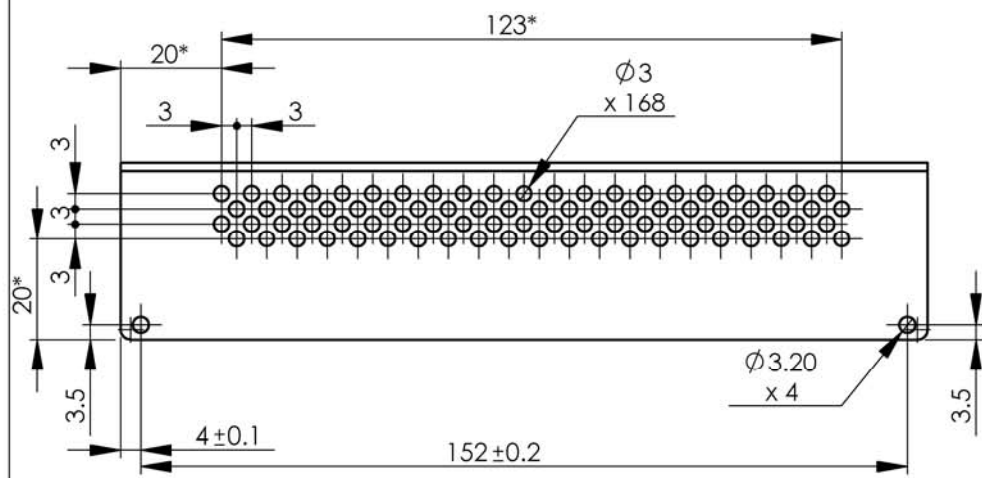
1. Unspecified R ≤ 0.2
 2. Unspecified tolerances: except p.3: DIN7168/FINE

Tolerance		
Nominal	IT12	
>	≤	
6	30	0.1
30	120	0.2
120	315	0.3
315	1000	0.4
1000	2000	0.6
		1.0

External: -IT12
 Internal: +IT12
 Others: $\pm IT12/2$

3. Hole coordinates with unspecified tolerances
 Hole pattern $\phi \phi 0,2$ for all coordinative dim-s;
 countersunks - $\phi \phi 0,1$

Do not scale drawing			Finish:	Scale 1:1	Mass: 65 g
			Date	Name	Material:
		Drawn.	07.02.06	Veiders	
		Check:			
		Approv.			
				Description:	
				RB112 indoor case base asebly	
		Drawing code:			A3
		RB112-03 KR			sheet 1 of 1
		Printed: 27.03.2006			

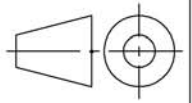



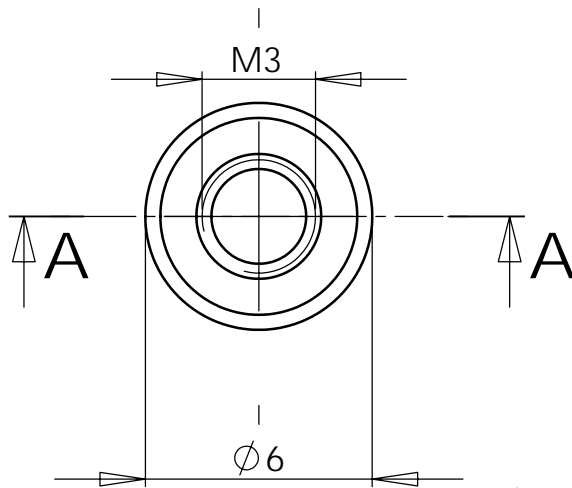
1. Unspecified R ≤ 0.2
 2. Unspecified tolerances: DIN7168/FINE
 except p.3:

Tolerance		IT12
Nominal		
>	\leq	
6	30	0.1
30	120	0.3
120	315	0.4
315	1000	0.6
1000	2000	1.0

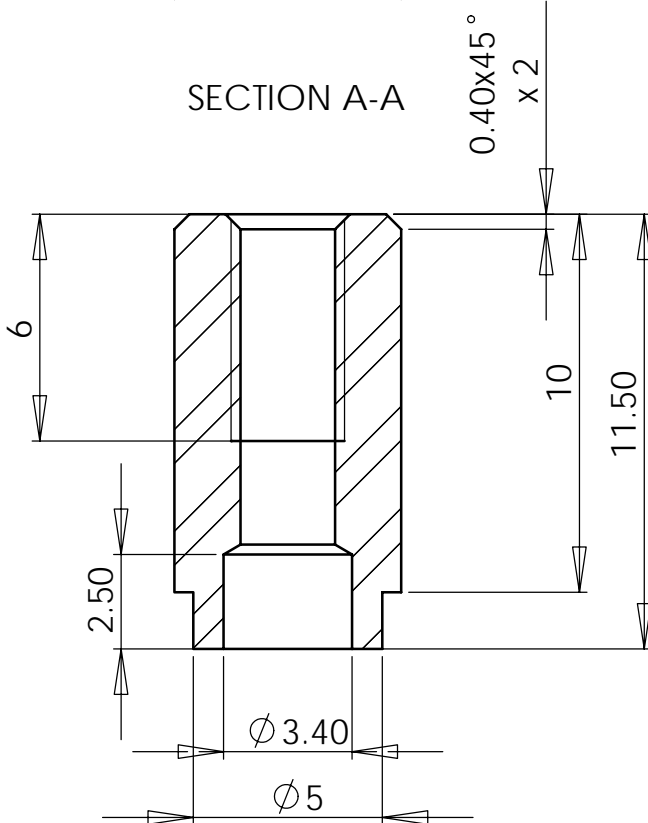
External: -IT12
 Internal: +IT12
 Others: $\pm IT12/2$

3. Hole coordinates with unspecified tolerances
 Hole pattern $\Phi \ 0.2$ for all coordinative dim-s;
 countersunks - $\Phi \ 0.1$

Do not scale drawing			Finish:	Scale 1:1.5	Mass: 100 g
Date	Name		Material: Aluminium 5052 AlMg 2.5		
Drawn. 06.02.06	Veiders	Description: RB112 indoor case cover			
Check.		Drawing code: RB112-02 R1			
Approv.		A3			
		Printed: 27.03.2006			
		sheet 1 of 1			



SECTION A-A



1. Unspecified R ≤ 0.2
 2. Unspecified tolerances: DIN7168/FINE
 except p.3:

Tolerance		
Nominal		IT12
>	\leq	
	6	0.1
6	30	0.2
30	120	0.3
120	315	0.4
315	1000	0.6
1000	2000	1.0

External: -IT12
 Internal: +IT12
 Others: $\pm IT12/2$

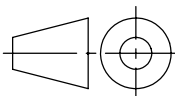
3. Hole coordinates with unspecified tolerances

Hole pattern $\oplus \text{ } \phi 0,2$ for

all coordinative dim-s;

countersunks - $\oplus \text{ } \phi 0,1$

Do not scale drawing



Finish
Ni or Zn plated

Scale 5:1

Material:
steel

	Date	Name
Drawn	13.06.05	Veiders
Check.		



Spacer 10mm

Drawing code:
K61

A4