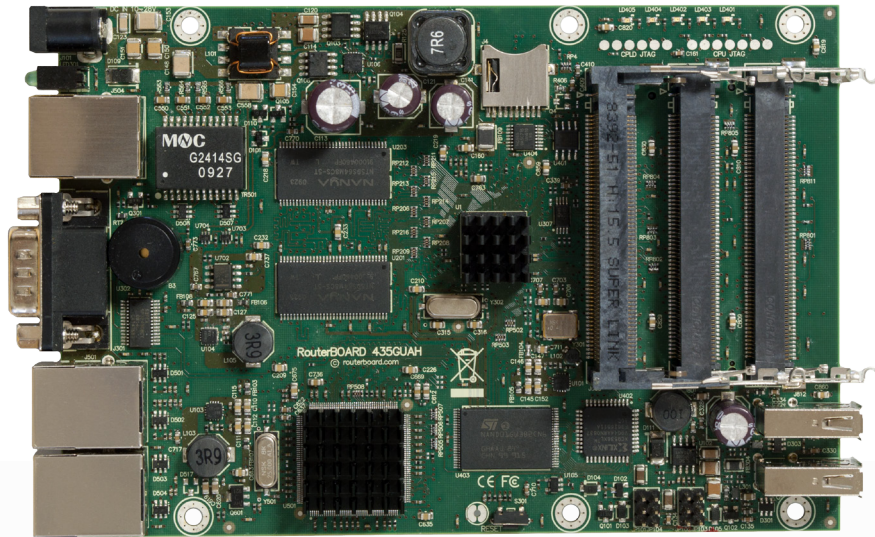


# RB435G

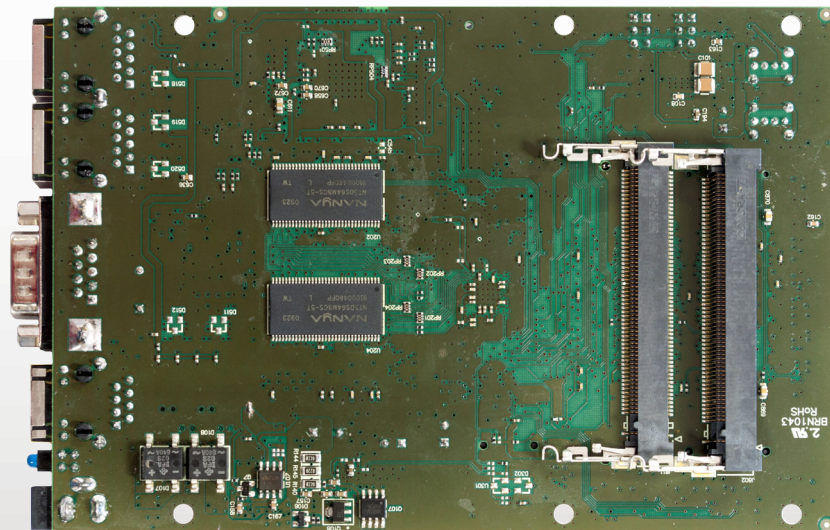


Five miniPCI slots and three Gigabit Ethernet ports give you enough connectivity options to use the RB435G as the central part of your network. Now with Gigabit ports, to properly utilize all the speed 802.11n with Nv2 wireless.

Five miniPCI slots to be used for four sectors and a backbone, or any other configuration you need.

The two USB 2.0 ports can be used for extending storage, adding a 3G wireless modem for backup connectivity, for a mobile installation or all together.

The RB435G comes with a 680MHz Atheros CPU and is preinstalled with a Level5 RouterOS license.



CPU	Atheros AR7161 680MHz
Memory	256MB DDR SDRAM onboard memory
Boot loader	RouterBOOT
Data storage	128MB onboard NAND memory chip and microSD slot for expansion
Ethernet	Three 10/100/1000 Gigabit Ethernet ports with Auto-MDI/X
miniPCI	Five miniPCI Type IIIA/IIIB slots
Expansion	Two USB 2.0 ports with powering (5V 1A supply)
Extras	Reset switch, beeper, temperature, voltage and current monitors
Serial port	One DB9 RS232C asynchronous serial port
LEDs	Power, NAND activity, 5 user LEDs
Power options	PoE: 8-28V DC on Ether1 (Non 802.3af). Jack: 8-30V DC
Dimensions	105 mm x 154 mm, Weight: 153g
Power consumption	~4.5W without extension cards
Output to cards	19W without any cooling, up to 40W with active cooling
Operating System	MikroTik RouterOS, L5 license